



ZKT ECO



PT100 Fingerprint Patrol System

Introduction

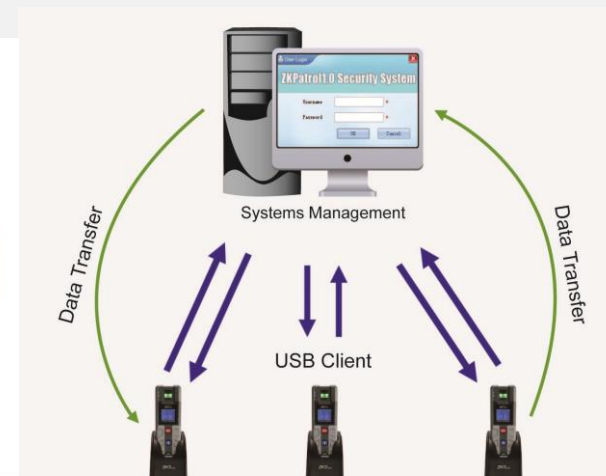
- In today's rapidly-changing information society, large corporations and small companies alike increasingly require modern data collection and auto-ID systems. To meet these demands, ZKTeco has developed an innovative portable data acquisition unit, the “PT100”, a specialized product for guard tour monitoring system and other applications.

➤ Technology advantages

The PT100 reads radio frequency identification (RFID) tags and **supports fingerprint authentication**, these remarkable features could satisfy the data collection needs of both commercial and industrial applications.

➤ Highlights

- Handheld, Portable
- Mobile
- Software ready



Profile





Features

1. 1.44 inch color LCD display
To show important information such as patrol stuff name, patrol tour name, tags/card ID number, Events/Incident Messages to select (programmable by software), and tips during patrolling.
2. Fingerprint authentication, accurate and convenient
PT100 requires patrol stuff to verify his/her ID by fingerprint or identity card at each checkpoint.
3. Reads EM 125 KHz proximity cards and tags, optional 13.56MHz Mifare card
Built-in RF card reader to read employee ID cards and tags installed at checkpoints/stations/locations
4. Robust design for shock resistant, anti-drop up to 1 meter
Protect the PT100 from throwing around by rude stuff
5. IP65 rated waterproof and dustproof
Ensure the PT100 to work in rough environments
6. Low power consumption, auto-sleep for energy saving.
Standby 7 days, nonstop working (punching fingers constantly) up to 12 hours
7. USB data acquisition and charging base
USB connection with PC for system configuration and management, USB or power supply charging
8. Dedicated software for system configuration, data collection and making reports.
A user-friendly and simple-to-use software for system management
9. SDK available for further development
PULL SDK free for integration with third party software



Specification

Model	PT100
Picture	
Fingerprint Sensor	Infrared Auto-sleep Optical Sensor
Fingerprint Algorithm	ZKFinger10.0
Built-in RF Card Reader	125KHz Proximity Card(Optional 13.56MHz Mifare Card)
Fingerprint Capacity	500
Card Capacity	1,000
Log Capacity	30,000
Communication	USB Client
Power Supply	5V, 800mA
Battery	2,000mA Lithium Battery
Operating Temperature	-10°C~40°C
Dimension(L*W*D)	162*52*46mm
Net Weight	220 g (0.485 lb)
Ingression Protection Rate	IP65



What is a Patrol System?

- A patrol system is a very beneficial tool which enables company HR to supervise if people assigned to a patrol task are completing their duties on time and at their correct locations.
- In summary the system can record exactly who, when, where, what they inspected at a location.

There are 4 main components to a guard tour system:

No.	Item	Traditional	PT100
1	Guard tour handheld data collector	RFID, iButton, NFC reader	FP+RFID reader
2	Location checkpoint	RFID, iButton	RFID Tag
3	Incident recording facility	Event wallet/booklet	LCD display ★
4	Management software	Various	ZKPatrol 1.0



How does the System Work?

- It works by installing a series of RFID Tags(ZKLT-E/M) along patrol routes and having patrol personnel perform readings on the tags using the PT100.

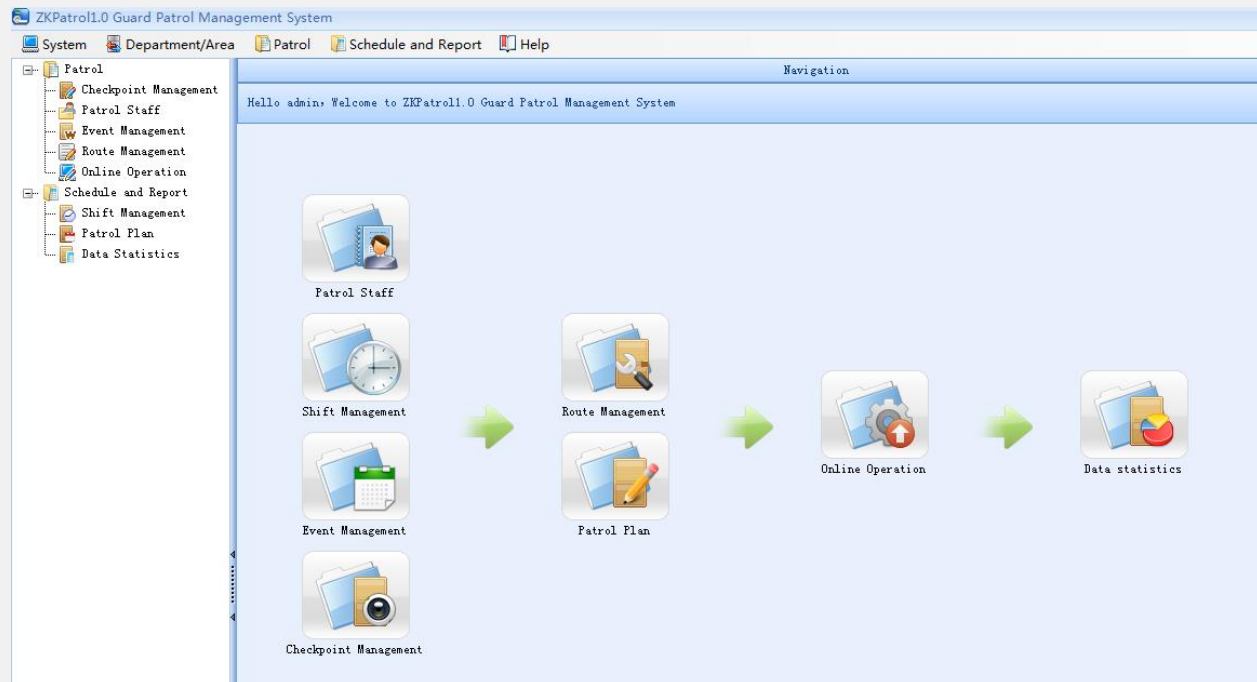
PT100 could require the patroller to verify identity by fingerprint (card, or none) at each checkpoint, and record events happen on site.

The recorded tag numbers along with each associated time stamps, events and personnel ID are later uploaded via charging/acquisition base to computers for processing and reporting.



How is the Software?

- ZKPatrol 1.0
 - ✓ Easy to use, free of charge
 - ✓ Checkpoint, Personnel, Events management
 - ✓ USB connection for data upload and download
 - ✓ Shift, Patrol Plan and Reports for attendance statistics

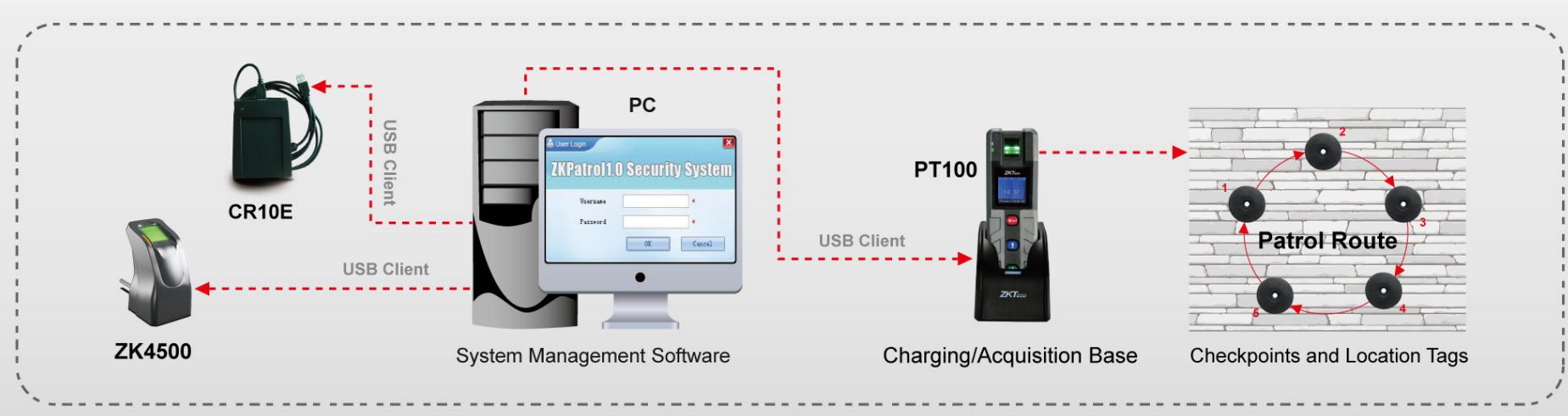




System Components

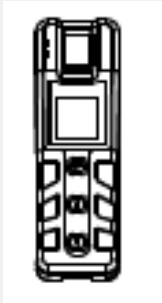
Item	Picture	Description	Note
ZKLT-E(EM) ZKLT-M(Mifare)		30mm proximity tag <i>ID number printed on the tag for manually input when configure Checkpoints by software</i> ★	Location Tag, Must have
Software		System configuration and management	Comes with CD
ZK4500		USB fingerprint reader for enrollment	Strongly recommended
CR10E CR10M		USB card reader for card registration	Recommended
Credentials/Badges		ID cards or key fob for patrol staff	Optional

System Configuration





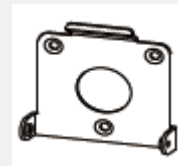
Packing List



PT100



Charging/Acquisition Base



Rear Plate



USB Cable

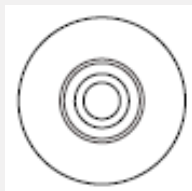


Power Supply

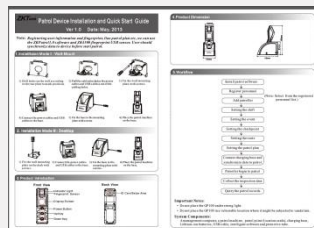


Holster

Item	Size	Weight
PT100	162*52*46mm	0.22kg
Boxed PT100	30*25*11.5CM	1.15KG
6 pcs/Carton Per Carton Size: 54*33*37CM Per Carton Weight: 7.2KG		



Software CD



Documentation



Screws and Holders



Benefits

❑ Measuring patrol performance and compliance

If your company is experiencing difficulties with guard patrol performance and compliance, try using this innovative fingerprint guard tour monitoring system, it will improve efficiency of patrol tours and make reporting easier for payroll.

❑ Effectively stop “buddy punching”

Take guard patrol for instance, every time the patroller arrived at designated patrol location, they shall be required to verify identity by matching their fingerprints which makes sure it's him but not others do the job.

❑ PT100 to be a leading product in the guard tour market

- ✓ Complete options: Fingerprint and RFID reader to replace traditional system
- ✓ Cost-effective system: no events wallet required, convenient and saving costs
- ✓ Few players in the market, especially distinct from competitors
- ✓ Extremely competitive and good profits





Market



Airport



Restaurant



Hospital



Supermarket



Hotel



Building



Police



Logistics

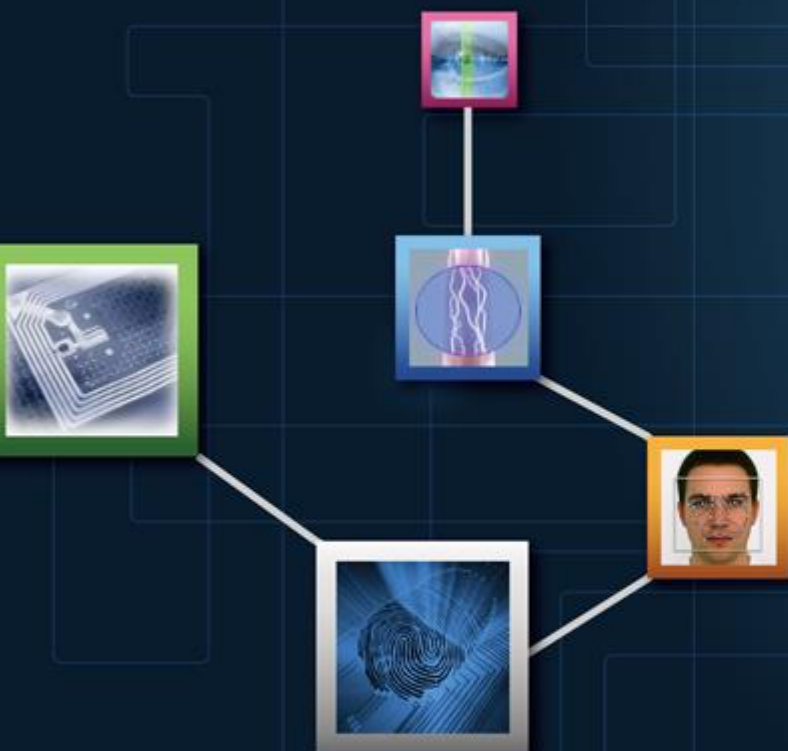


Construction

Applications:

- Security Guard Patrol
- Equipment Maintenance
- Fleet Control
- Lawn Services Routes
- Delivery Routes
- Sales Personnel Routes
- Alarm Response Routes
- Fire Extinguishers Routes
- Cleaning Service Routes
- Maintenance Routes

... ..



The End

*Innovation Creates Dream
Thank You!*

Copyright © 2012, ZKTeco Inc. All rights reserved.

ZKTeco may, at any time and without notice, make changes or improvements to the products and services offered and/or cease producing or commercializing them. The ZKTeco logo and trademark are the property of ZKTeco Inc.

ZKTeco Inc.

ZK Mansion, Wuhe Rd, Gangtou, Bantian, Buji Town, Longgang District, Shenzhen China 518129

Tel: 86-755-8960 2345/46/47/48

Fax: 86-755-8960 2675

www.zkteco.com